

Installation USB adapter

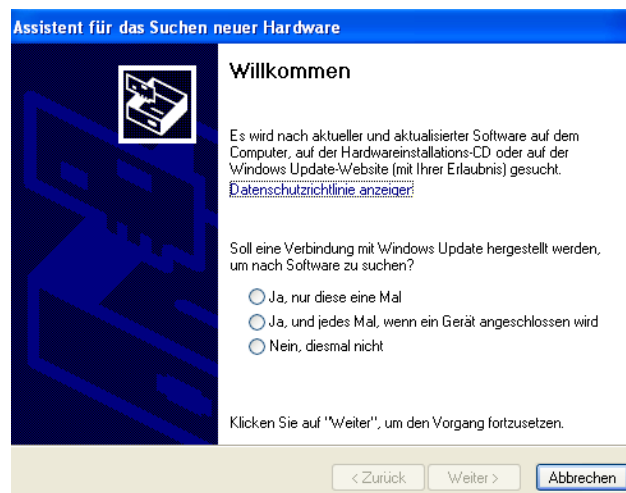
You can download the driver for the USB adapter from our website: (see braxx control units in www.eurodima.com).

1 Installation

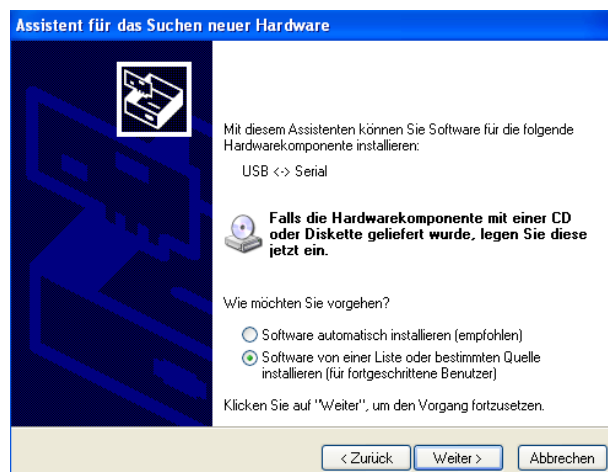
- 1.1 Download file „USB-Adapter Driver“
- 1.2 Unpack the file into the folder C:\Programme\EDTEurodima
- 1.3 Plug green cable to any USB port at the Computer and to the USB adapter
- 1.4 Windows will recognise a new hardware



- 1.5 The window „Assistant for search of new hardware“ (or similar) opens.

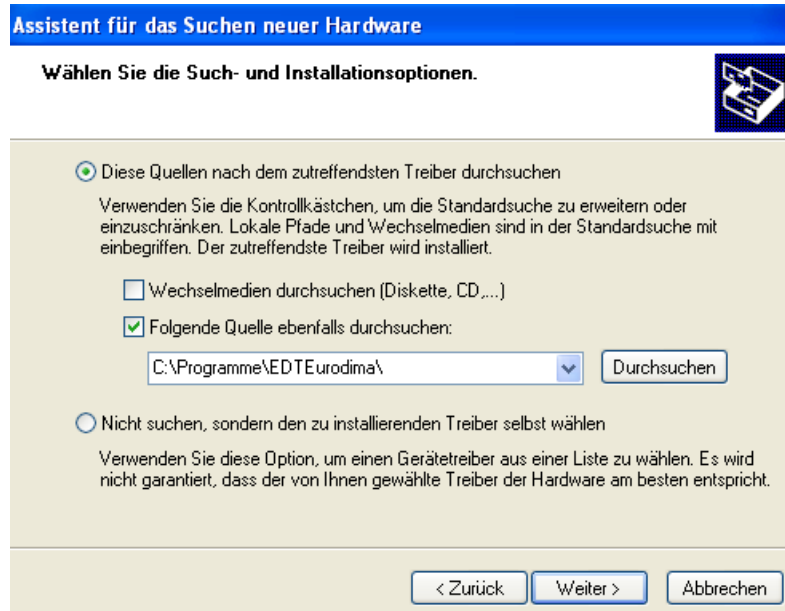


- 1.6 Click onto option „No, not this time“ (or similar) and confirm with “Next”



Installation USB adapter

- 1.7 Use the option „Install software from a list or from a defined source“ (or similar) and confirm with „Next“



- 1.8 Indicate the folder C:\Programme\EDTEurodima

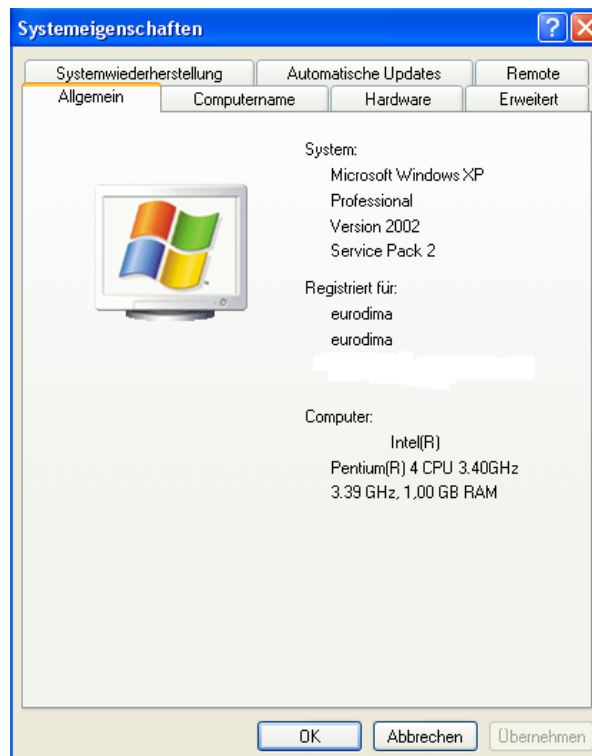


- 1.9 Click on „Complete“ (or similar)
1.10 The window „Assistant for search of new hardware“ (or similar) opens again
1.11 Repeat steps 6-9
1.12 The installation of the driver is completed

Installation USB adapter

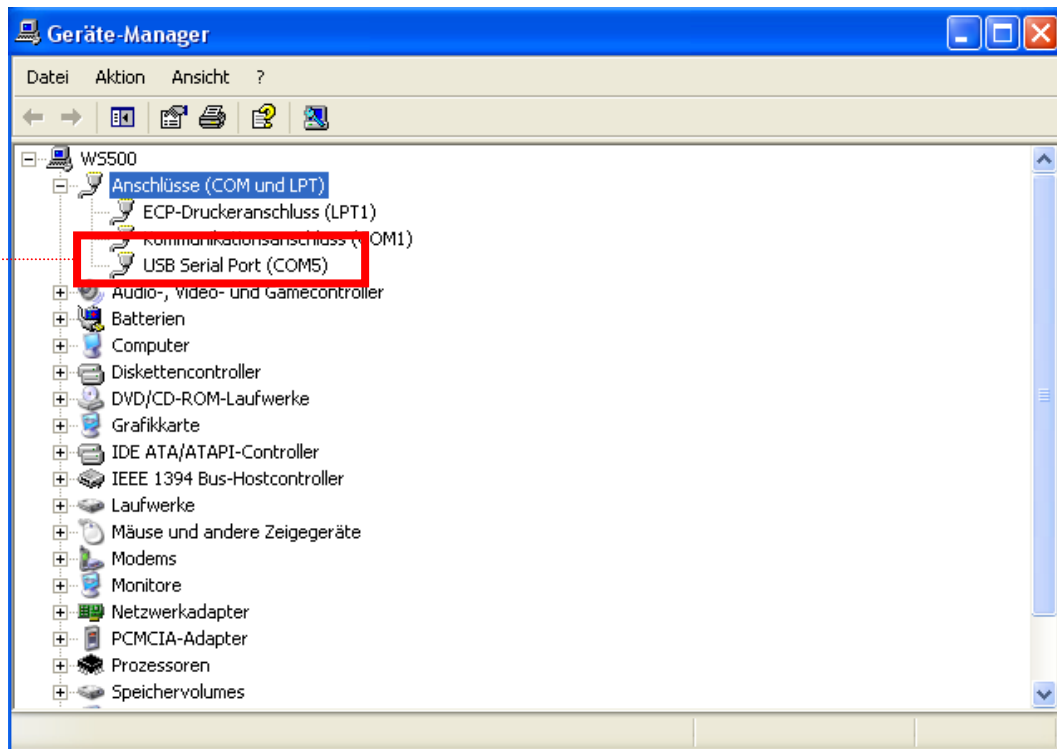
2 Detecting the COM port

- 2.1 Click on:
„Start“ >> „System control“ >> „Performance and Maintenance“ >> „System“ (or similar)
- 2.2 The window „system settings“ (or similar) opens



- 2.3 Select tab „Hardware“ and choose button „Device manager“
- 2.4 The window „Device manager“ opens

Installation USB adapter



- 2.5 At the data links (or similar name), the USB adapter is listed
- 2.6 In this case, the USB adapter uses the COM port 5: This depends on the USB slot that the adapter is plugged in.

Important: This COM port must be used in the braxx Analyzer.

