

THE REVOLUTION IN DIAMOND DRILLING

REVODRILL 350



Tool-free drill bit mounting
No drill bit clamping on
the drive shaft possible
Integrated work light
and even more



EURODIMA REVODRILL 350

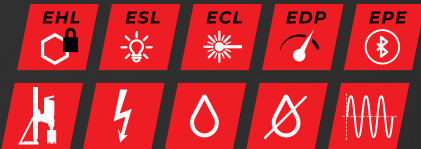
Maximum efficiency, reliability, and innovative technology – the REVODRILL 350 sets new standards in professional core drilling. The **tool-free clamping system** allows for fast drill bit changes, while the powerful 230V permanent magnet motor technology ensures **outstanding performance** and unstoppable torque. Smart features such as LED status indicators, laser drilling center indicator and app connectivity provide complete control. Robust and built for tough construction site conditions – the future of core drilling starts here!

- / **Tool-free** drill bit mounting with standard 1 ¼" connection
- / Core bit powered by its external hex drive
- / No drill bit clamping between the drill bit and the drive shaft possible
- / Automatic power adjustment for **maximum torque output**
- / Suitable for wet & dry drilling (bypass)
- / **No slip clutch** required due to special gearbox design – no readjustment or maintenance necessary
- / Speed adjustment between drill bit diameter and gears via potentiometer
- / Integrated drill-start assist
- / Extremely robust and durable construction - **very low maintenance**

No drill bit clamping on the drive shaft possible

Tool-free drill bit mounting

Integrated work light



LED work light and color status visualization



The integrated **LED work light** not only provides optimal visibility but also acts as a **smart status display**. Operators receive crucial information about the machine's status and overload protection at a glance – a true advantage in terms of safety and user convenience. Additionally, a **laser drilling center indicator** can be activated at the push of a button.

Via the dedicated app, users can monitor **real-time operational data**. An integrated logbook automatically records operating hours and usage history. The system provides **maintenance reminders** and displays service information, helping to minimize downtime. Additionally, a theft protection feature enhances security. This digital connectivity ensures maximum transparency and significantly simplifies maintenance.



- EHL** EURODIMA HEX LOCK
- ESL** EURODIMA SMART LIGHT
- ECL** EURODIMA CENTRIC LASER

- EDP** EURODIMA DYNAMIC POWER
- EPE** EURODIMA PRODUCT EXPERIENCE

DRILL MOTOR APP
Logbook
Service history
Theft protection
Device management

TECHNICAL SPECIFICATIONS


Voltage	230 V / 110 V
Nominal current	16A
Power consumption	max. 4,200 W
Tool holder	1 ¼"
Weight approx.	17.8 kg
Nominal speed	1 st gear: 170 / 225 / 250 / 250 / 250 min ⁻¹ 2 nd gear: 300 / 330 / 370 / 390 / 410 / 440 / 470 / 550 / 600 min ⁻¹ 3 rd gear: 505 / 525 / 600 / 655 / 730 / 815 / 930 / 1065 / 1065 min ⁻¹
Max. drilling diameter	52 - 400 mm
Dimensions	600 x 205 x 190 mm



EURODIMA

REVOSTAND 400

Perfectly matched to the ERD350 drill motor, the REVOSTAND 400 core drill stand offers **tool-free** operation, allowing quick and precise alignment with maximum stability. Its robust yet lightweight design and ergonomic handling make it the perfect choice for demanding core drilling applications.

- / **Tool-free** adjustments using the feed lever 
- / Very lightweight and durable design
- / Universal drill motor interface – fits all standard core drill motors
- / Feed gearbox with 1 : 2,2 ratio for controlled lowering
- / Feed carriage with dual-side control and locking
- / Stepless angle adjustment +/-
- / High-quality, replaceable steel rack and guide rails
- / Inclined bracing for maximum stability
- / Integrated carrying handle
- / Roller guide with minimal wear
- / Precise alignment with horizontal and vertical levels
- / Drilling depth & angle adjustment scale
- / Drill motor mounting plate included in delivery



Integrated carrying handle

Stepless angle adjustment +/-

TECHNICAL SPECIFICATIONS

Depth	410 mm
Width	240 mm
Height	1,045 mm
Travel	715 mm
Drilling diameter	max. 400 mm
Weight	16.5 kg
Drilling angle	+50°/-70° stepless



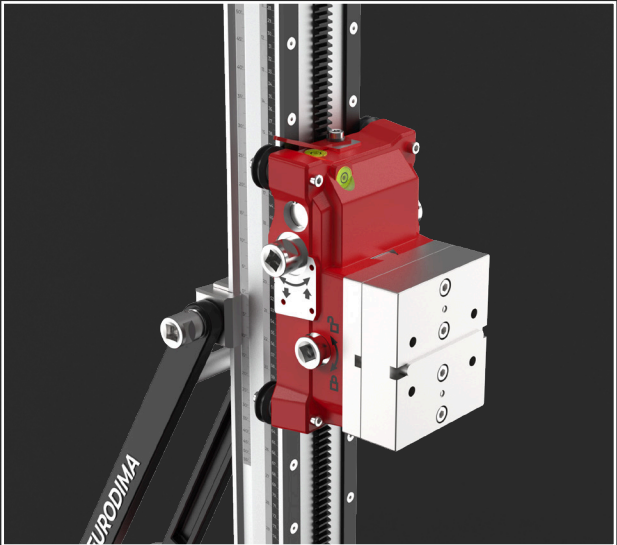
- / Robust base plate
- / **Tool-free** leveling screws



- / Feed gearbox with 1 : 2,2 ratio
- / **Tool-free** drill motor locking

OPTIONAL ACCESSORIES

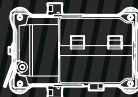
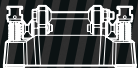
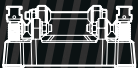
- Drill motor plates
- Spacer plates
- Extended drill column
- Quick-change spacer
- Cross handle



- / Optional: 35 mm spacer plate for up to 500 mm core diameter



- / Optional: wheel kit with additional grip



EURODIMA

REVOSTAND 250

Perfectly matched with the ERD350 drill motor – the REVOSTAND 250 core drill stand impresses with **tool-free** operation, precise alignment and high stability. Thanks to its lightweight design and base plate with vacuum option, it's ideal for flexible on-site use. The robust construction and ergonomic handling make it the perfect choice for demanding core drilling tasks where mobility and efficiency are essential.

- / **Tool-free** adjustments using the feed lever
- / Very lightweight and durable design
- / Universal drill motor interface – fits all standard core drill motors
- / Feed carriage with dual-side control and locking
- / Stepless angle adjustment +/-
- / High-quality, replaceable steel rack and guide rails
- / Inclined bracing for maximum stability
- / Integrated carrying handle
- / Roller guide with minimal wear
- / Precise alignment with horizontal and vertical levels
- / Drilling depth & angle adjustment scale
- / Base plate with vacuum fixation option
- / Drill motor mounting plate included in delivery

Stepless angle adjustment +/-

Integrated carrying handle

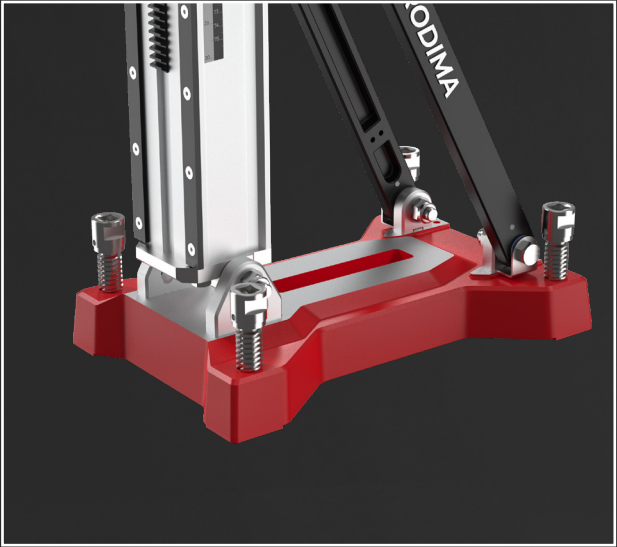
Base plate with vacuum fixation option

TECHNICAL DATA

Depth	375 mm
Depth with clamping collar	525 mm
Width	230 mm
Height	1,035 mm
Travel	740 mm
Drilling diameter	max. 250 mm
Weight	14.5 kg
Drilling angle	+50°/-70° stepless



- / Base plate with vacuum fixation option
- / **Tool-free** leveling screws



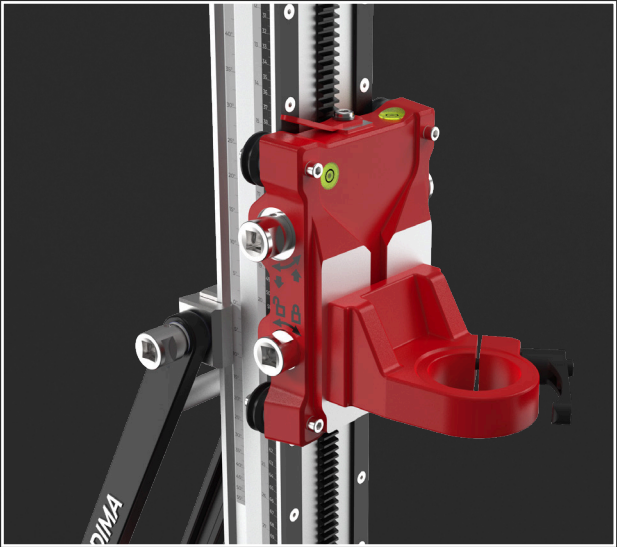
- / Horizontal and vertical levels
- / **Tool-free** drill motor locking

OPTIONAL ACCESSORIES

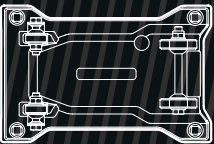
- Drill motor plates
- Spacer plates
- Extended drill column
- Quick-change spacer
- Cross handle
- Vacuum set



- / Optional: wheel kit with additional grip



- / Optional: clamping collar Ø 60 mm & reduction ring to Ø 56 mm

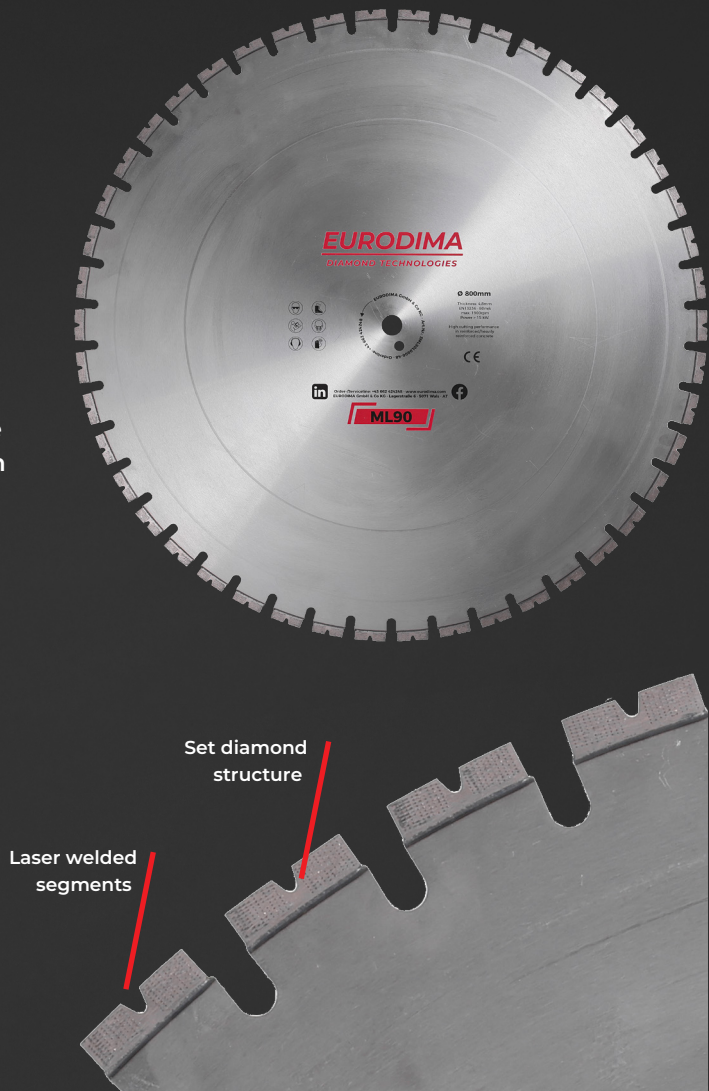


EURODIMA
*Wall saw blade with
set diamonds
ML90*

The ML90 sets new standards in wall sawing technology.

With **20% higher cutting performance** than its predecessor, it offers faster cuts with the same durability – ideal for demanding applications in concrete and reinforced concrete.

- / **Laser-welded diamond segments**
for a secure bond between the segment and core
- / **Optimized segment geometry**
for improved water and slurry removal
- / **Exceptional performance in reinforced concrete and hard aggregates**
(e.g., quartz)
- / **High cutting speed on steel reinforcement** for fast and efficient cuts
- / **Pre-set diamond structure**
for consistent performance and precise cutting results
- / **Recommended from 15 kW**



Ø blade mm	Toothings	Ø hole + NL* mm	Number of segments	Segment Length x Width x Height (mm)	Part no.
600	C1	25,40 + NL	36	40 x 4,0 x 12	3ML90L0600-40
600	C1	25,40 + NL	36	40 x 5,0 x 12	3ML90L0600-50
650	C1	25,40 + NL	38	40 x 4,0 x 12	3ML90L0650-40
650	C1	25,40 + NL	38	40 x 5,0 x 12	3ML90L0650-50
700	C1	25,40 + NL	42	40 x 4,0 x 12	3ML90L0700-40
700	C1	25,40 + NL	42	40 x 4,8 x 12	3ML90L0700-47
800	C1	25,40 + NL	46	40 x 4,0 x 12	3ML90L0800-40
800	C1	25,40 + NL	46	40 x 4,8 x 12	3ML90L0800-47
825	C1	25,40 + NL	47	40 x 4,8 x 12	3ML90L0825-47
900	C1	25,40 + NL	50	40 x 4,4 x 12	3ML90L0900-44
1000	C1	25,40 + NL	56	40 x 4,4 x 12	3ML90L1000-44
1200	C1	25,40 + NL	67	40 x 4,4 x 12	3ML90L1200-44

/ *NL = pin hole
/ The segment foot height can vary between 1 - 2 mm



EURODIMA
Pressure water tank WT45E

The new WT45E pressure water tank is perfect for construction sites without a water connection, offering maximum flexibility and extremely long operating times. With a powerful lithium-ion battery and automatic pump shut-off when the water valve is closed, energy is used efficiently. The improved center of gravity ensures stable handling, even on uneven terrain.

- / **Robust chassis & solid rubber tires**
for maximum mobility on construction site
- / **30 m hose with universal hose connector**
for flexible applications
- / **Lithium-ion battery (8 Ah)**
for significantly longer runtimes and higher performance
- / **Automatic pump shut-off**
extends battery life
- / **Includes spray lance, charger and battery**
for versatile use



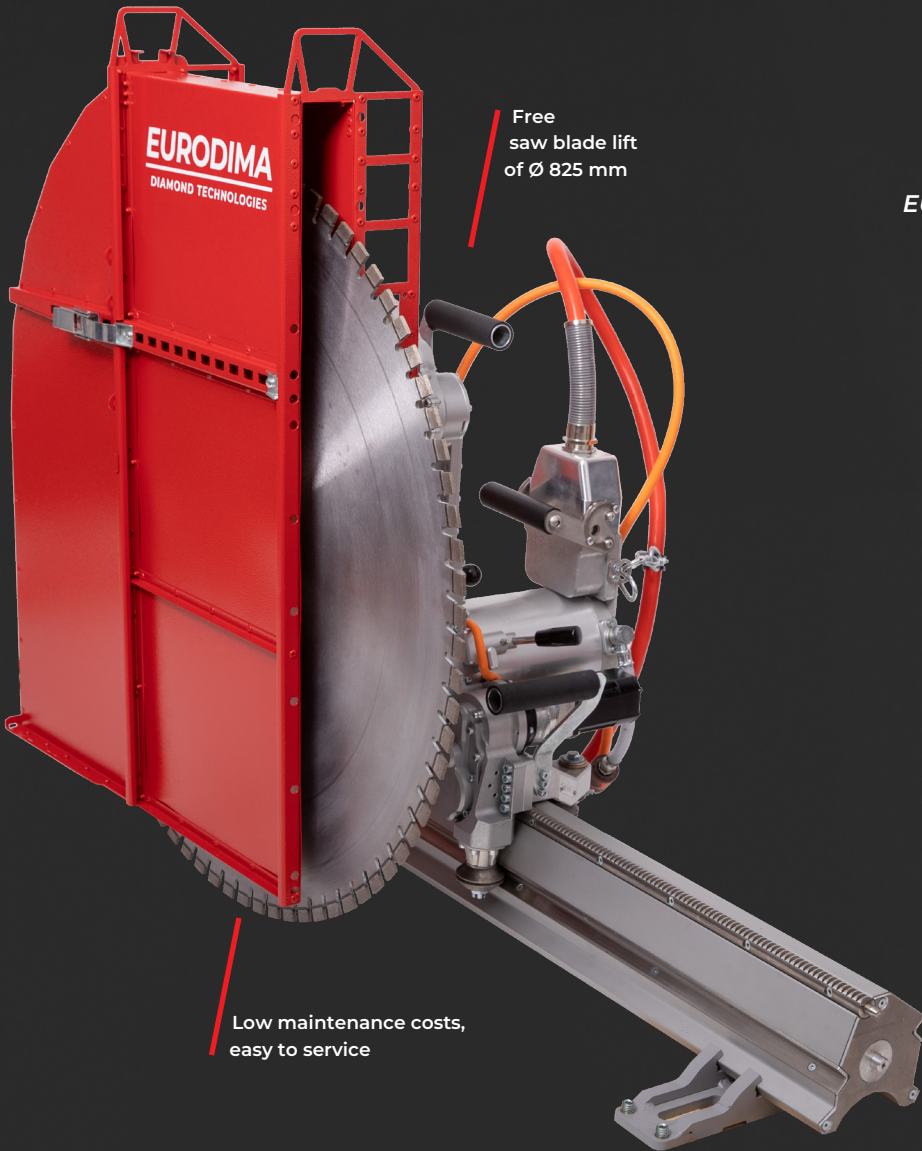
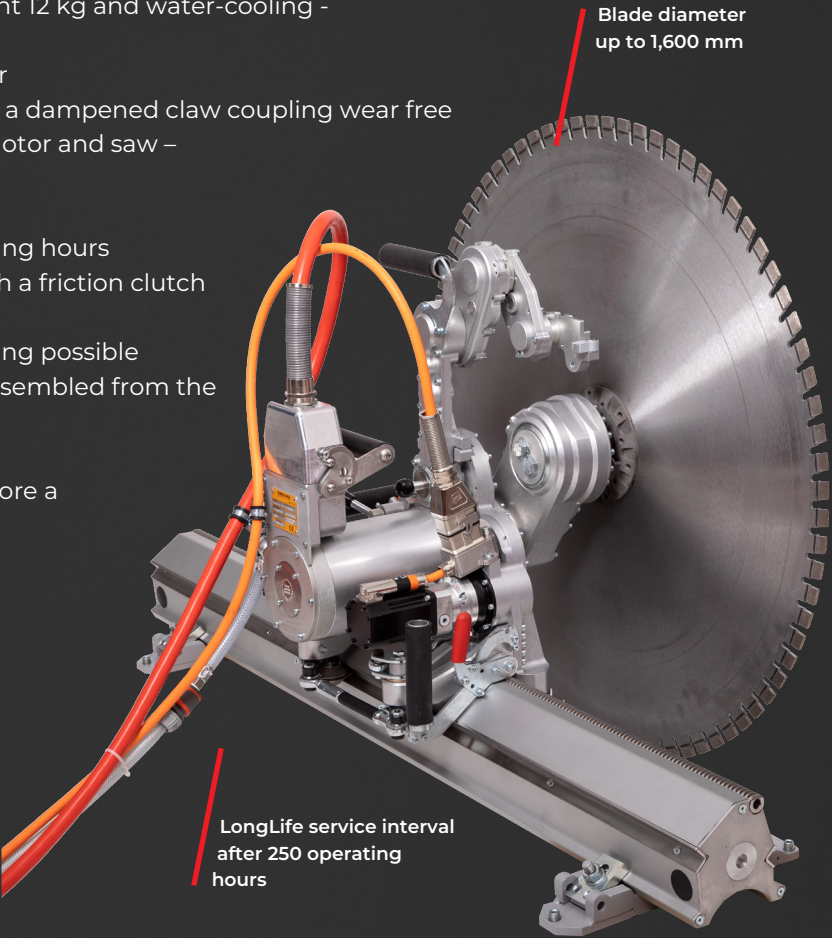
TECHNICAL SPECIFICATIONS	
Nominal voltage	230 V
Tank volume	45 L
Weight	18.5 kg (incl. lithium-ion battery)
Flow rate	~ 2 liters/minute
Delivery height	~ 12 m
Battery	12 V, 8 Ah
Dimensions (H x W x D)	990 x 380 x 620 mm

EURODIMA
ServoPower wall saw WS20E / WS20H

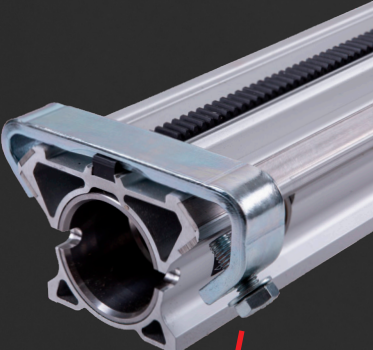
The wall saw delights users with maximum performance and low weight. A long tool life and the worldwide longest service interval for wall saws will also make this a very economical choice. Structurally identical feed and swivel motors, equipped with a wear-free electromagnetic brake, also contribute to the cost effectiveness.

The wall saw WS20 is available on two rail systems, as WS20E for the EURODIMA rail system and as WS20H for the rail system of the H version.

- / Motor with 20 kW ServoPower, convenient 12 kg and water-cooling - no additional after cooling necessary
- / **Tool-free** motor interlock with hand lever
- / Power transmission from the motor with a dampened claw coupling wear free
- / Autonomous cooling water drain from motor and saw – avoiding frost damage
- / Wear-free, electromagnetic brake
- / Long life service interval after 250 operating hours
- / Feed and swivel motor are protected with a friction clutch from overload
- / Simultaneous control of feed and swivelling possible
- / Flush flange can be assembled and disassembled from the motor side
- / Free saw blade lift of Ø 825 mm
- / Blade diameter up to Ø 1,600 mm, therefore a max. cutting depth of 725 mm
- / Air-cooled control box
- / No additional flush flange is required
- / Operation with 16 A also possible

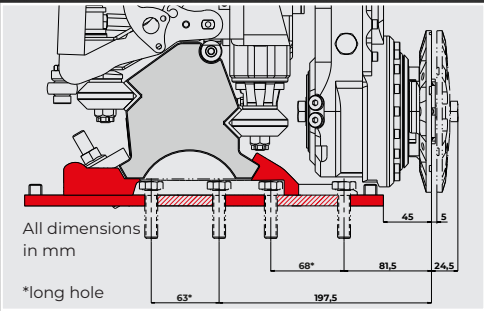


EURODIMA WS20H / DST 20-CA
Same distance to anchor

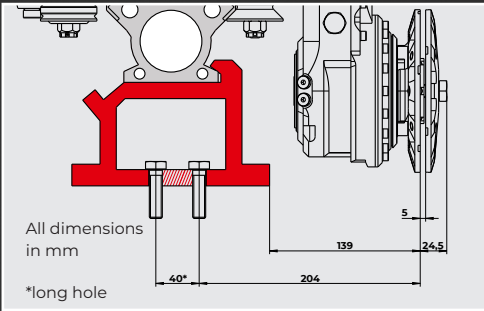


WS20H for
use on the
rail system
H version

Dowel dimension WS20E



Dowel dimension WS20H



/ SPECIFICATIONS

Output power at the saw blade
Max. speed at the saw blade
Max. blade diameter
Max. cutting depth
Feed and swivel force
Lowering – longitudinal feed
Max. speed of the swivel arm
Weight – wall saw motor
Weight – saw head without motor
Saw blade bore
Saw blade flange for flush cut

Machine depth
Machine width for horizontal swivel arm
Machine width

WS20E / WS20H

20 kW
1,140 rpm
1,600 mm
725 mm
300 kg
0–3 m/min
0–2 rpm
12.0 kg
29 kg
60 mm - other on request
WS20E TK 110 - 6 x M8 TK 130 - 6 x M8
WS20H TK 110 - 6 x M10 TK 130 - 6 x M8



EURODIMA Wall saw
WS20 - Construction
and functional test



REVOSTAND 400

EURODIMA

DIAMOND TECHNOLOGIES



**REVOLUTION
STARTS HERE –
SCAN TO JOIN!**



EURODIMA GmbH & Co KG
Lagerstraße 6 / A 5071 Wals
+43 662 42 42 48-0
office@eurodima.com
www.eurodima.com